


Slide 1

INTRODUCTION TO
TEP

Lori J. Henkemeier, MA, CCC-SLP
Speech-Language Pathologist
ENT Clinics of San Antonio
San Antonio, Texas

Slide 2



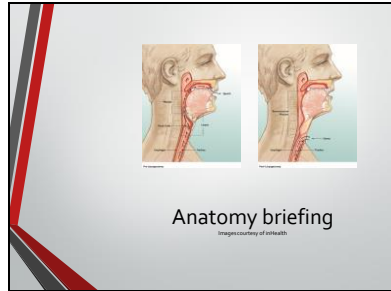
Disclosures
Lori Henkemeier is employed by the ENT Clinics of San Antonio.
She has no financial disclosures

Slide 3

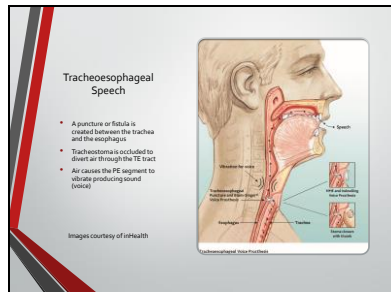
Objectives

- The participant will be able to describe what TEP speech is and how it works
- The participant will be able to determine who is an appropriate candidate for TEP
- The participant will be able to identify the various types of voice prostheses
- The participant will be able to identify the steps for changing a tracheoesophageal voice prosthesis

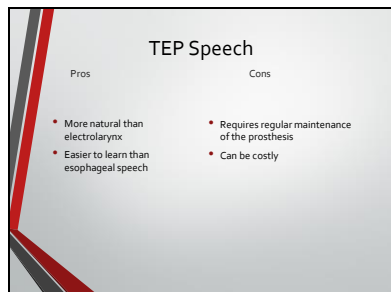
Slide 4



Slide 5



Slide 6



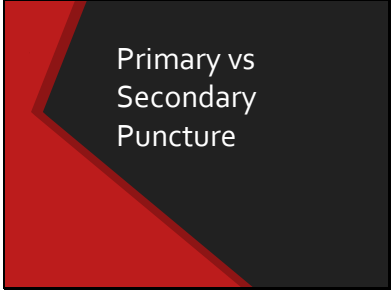
Slide 7



Slide 8



Slide 9



Slide 10

PRIMARY

- Puncture created at the time of initial surgery
- Prosthesis, catheter, or feeding tube can be place through the puncture
- May allow feeding through TEP site- no need for NG tube
- Patient does not have to go through a secondary procedure/surgery
- Migration of TEP as healing
- May be able to place prosthesis at time of surgery



Slide 11

SECONDARY

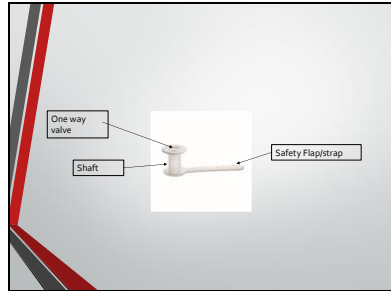
- Puncture created at a later date
- Can evaluate candidacy through insufflation testing
- Prosthesis or catheter placed through puncture
- Allows time for healing
- Can be done in some clinics
- May be able to place prosthesis at time of procedure
- Allow time to assess patient's motivation and candidacy for prosthesis

Slide 12

TEP Prostheses

Slide 13



Slide 14

TEP Voice prostheses

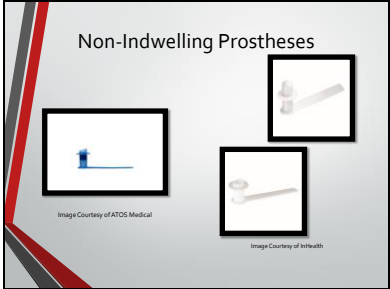
- One way valve, allowing air to enter the esophagus for talking without contents of the esophagus (mucus, food, liquids) entering the airway
- Placed with dissolvable gel caps or inserter devices
- 16, 17, 20 or 22.5 french in diameter
- 4.5mm to 28mm in length

Slide 15

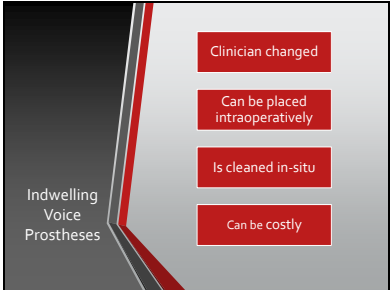
Non-Indwelling Prostheses

- Designed to be removed, cleaned and replaced by the patient
- Has a safety strap which remains
- Can be removed to clean and replaced
- Lower cost than indwelling prostheses and better reimbursement

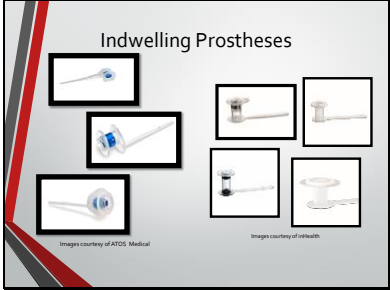
Slide 16



Slide 17



Slide 18




Slide 19

How do I choose?

- Indwelling versus Non-Indwelling
- Blom-Singer low pressure versus Provox NID
- Blom-Singer Indwelling, Blom-Singer Advantage, Blom-Singer Dual Valve, Provox Vegs, Provox 2, Provox ActiValve

Slide 20



Removal of TEP

Slide 21

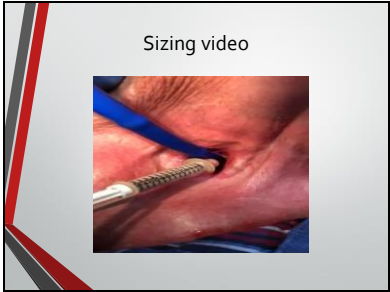
Sizing

- Insert the sizer through the TE tract
- Push through until you feel it pop
- Pull back gently until you feel slight resistance
- Read the number closest to the party wall
- If it is in between sizes go up in size

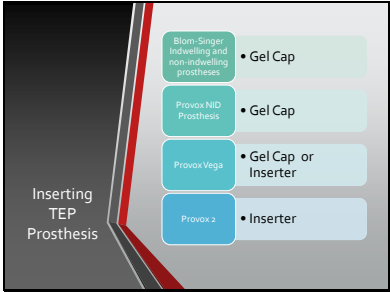
Slide 22



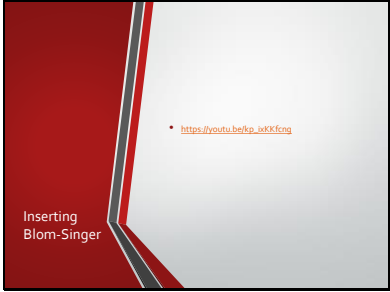
Slide 23



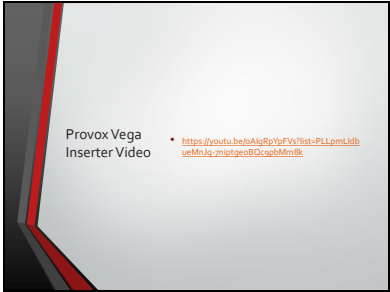
Slide 24



Slide 25



Slide 26



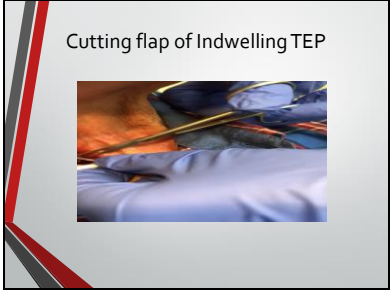
Slide 27



Slide 28



Slide 29



Slide 30

